

New Generation More than accurate

DPEX V

More stable, stronger anti-interference ability

25 National Patents 8 Invention Patents

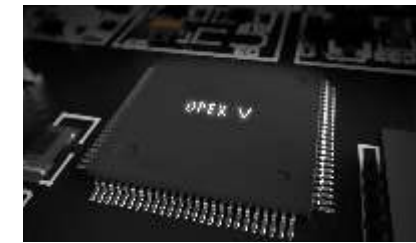
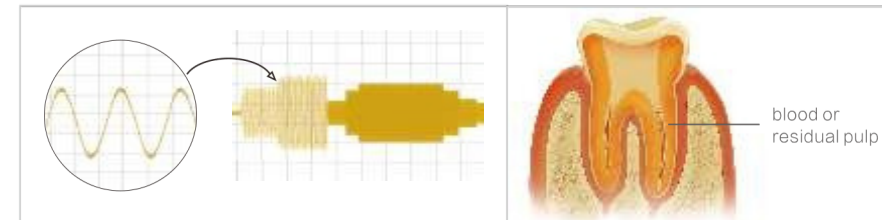


Scan and Login website for more information

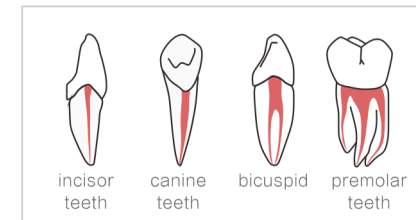
More than accurate

Newly upgraded algorithm makes it more stable and enables stronger anti-interference ability.

Multi-frequency apical position technology guarantees accurate measuring even there is blood or residual pulp in the root canal.



Measurement results will not be affected by the tooth type.

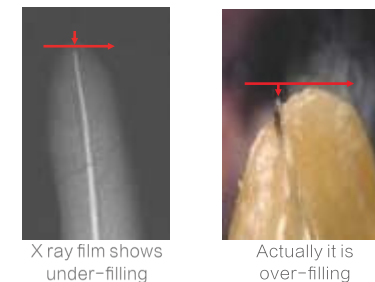


It will be more accurate with the use of rubber dam.

The defect of traditional measurement method

Disadvantage of handing method

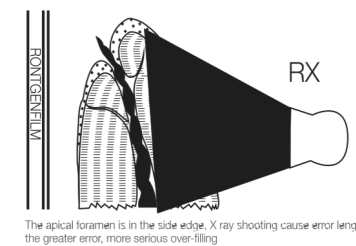
Based on hand feeling and patient's pain, dentists decide whether the measuring tool reaches apical foramen, with high subjectivity and low accuracy. Foreign literature suggest that providing the range of error +0.5 mm, accuracy of handing method is only 42%.



Disadvantage of X ray film

3D structure shooting at 2D plana, because of different angles, easily getting wrong data.

Apical foramen can't be shown in the X ray film, for over 80% apical foramens are in the side edge instead of apex.



Guilin Woodpecker Medical Instrument Co., Ltd.
Information Industrial Park, Guilin National High-Tech Zone, Guilin, Guangxi, 541004 P. R. China

Tel:
Europe Sales Dept.: +86-773-2350599, +86-773-5873196
North America, South America &
Oceania Sales Dept.:+86-773-2350599, +86-773-5873196
Asia & Africa Sales Dept.:+86-773-2350599, +86-773-5873196
Fax: +86-773-5822450
E-mail: woodpecker@glwoodpecker.com, sales@glwoodpecker.com
Website: http://www.glwoodpecker.com

DISTRIBUTED BY,

