



**Double Tips**

Experience seamless scanning with Large & Small sized tips, catering to various mouth sizes for a comfortable experience.



L 22x19mm S 19x17mm

**Double Buttons**

Innovative double-button layout lets you effortlessly rotate the device while maintaining your posture, streamlining your scanning process.

**Calibration Free**

Robust system stability without the need for accuracy and color calibration, reducing maintenance costs.

**Lightweight - 251g**

251g ultra-light body makes the operation simpler and more user-friendly.

**Exceptional Precision - 20µm**

The average error of the entire arch is as low as 20 µm, surpassing clinical accuracy standards and offering heightened scanning tolerance.

**Preheating/Powder Free**

Say goodbye to unnecessary waiting, maximizing your workflow efficiency.

**Ai + High-Speed Visual Technology**

Fast speed combined with Ai intelligent adaptation to varying mouth conditions (dark spots, high exposure, etc.), automatically eliminates environmental interference, ensuring consistently clear and accurate data.

**USB Connection**

Easily connect through USB for seamless power supply, enhancing operational flexibility.



Guilin Kevin Peter Technology Co., Ltd

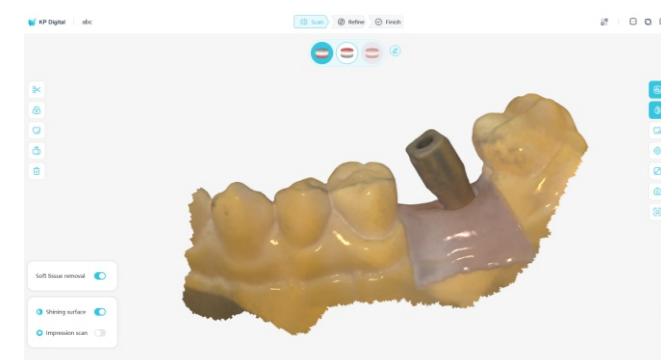


+86-773-2352685  
sales1@kvpeter.com  
North side of Linsu Rd, Lingui Town, Lingui Dist., Guilin, Guangxi 541100, P. R. China

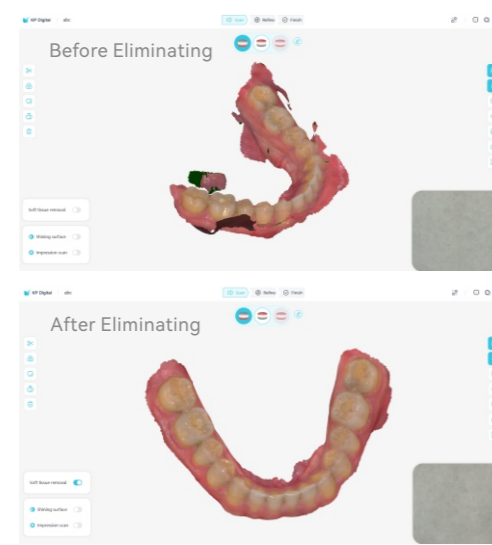
**Smile Scan/KP Digital Cloud Service Platform**



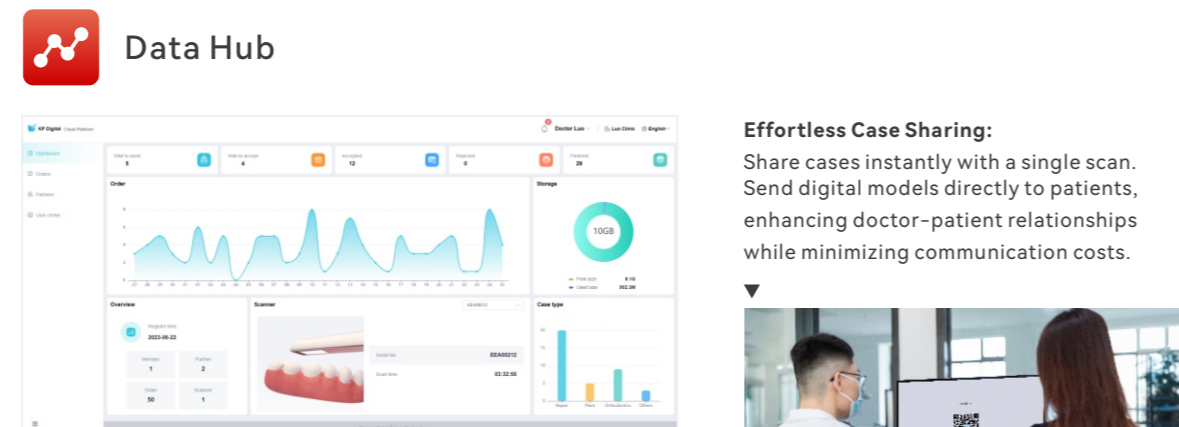
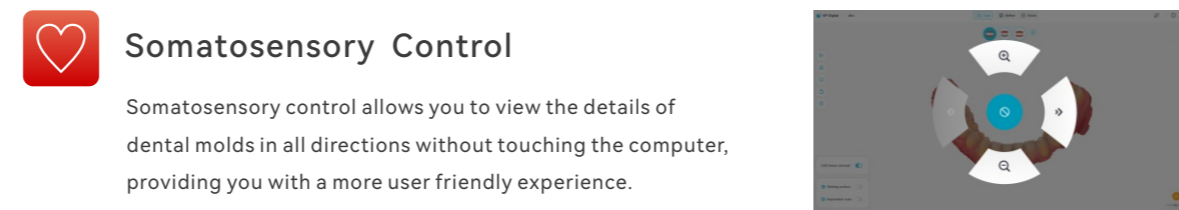
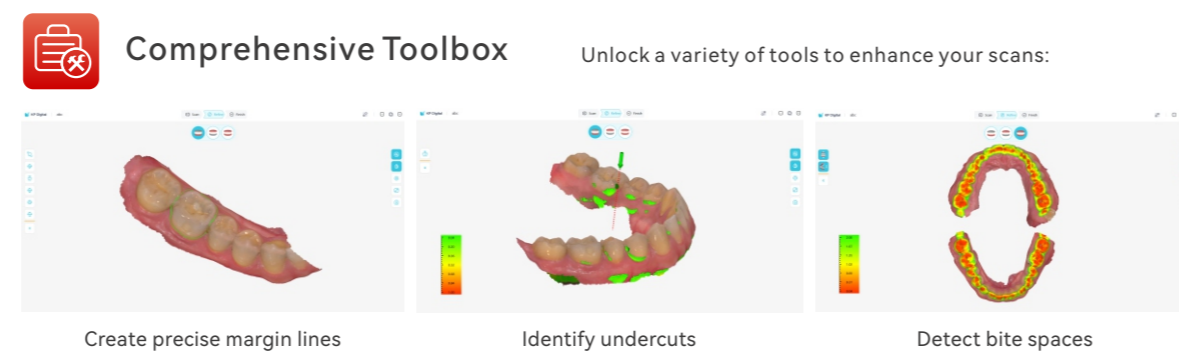
**Ai Scanning**



Adapt to harsh oral conditions such as dark spots and high reflections.

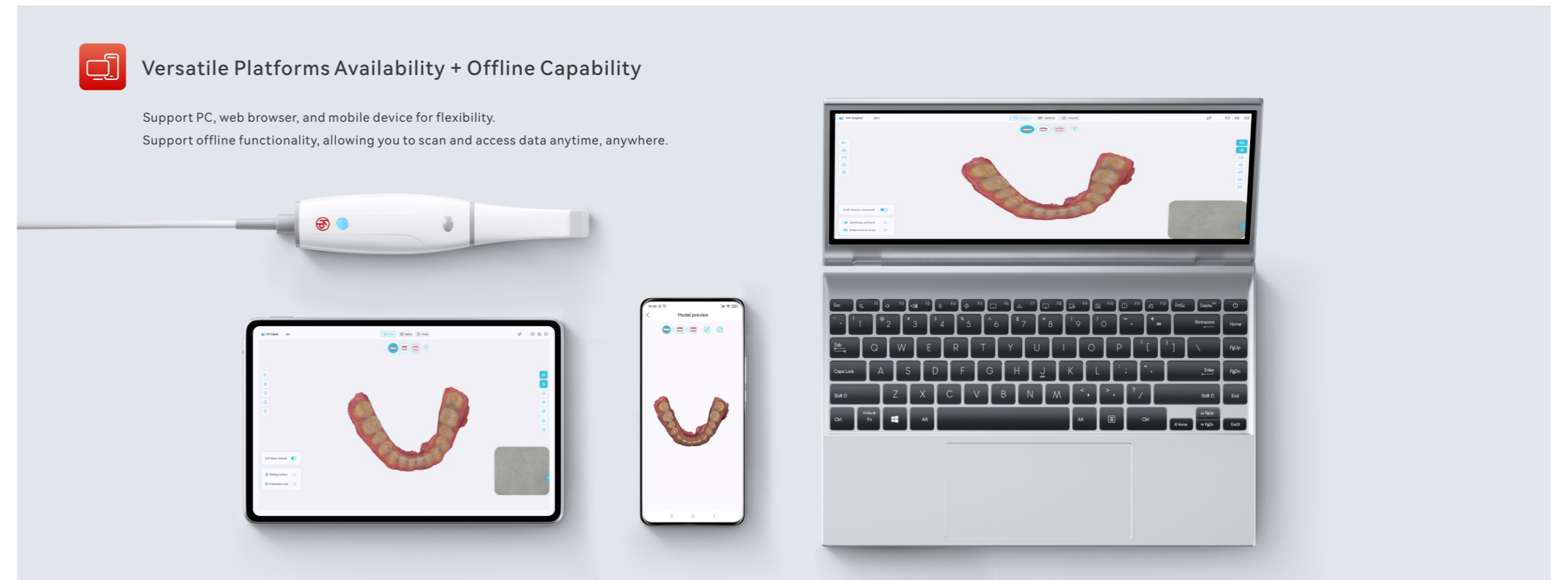
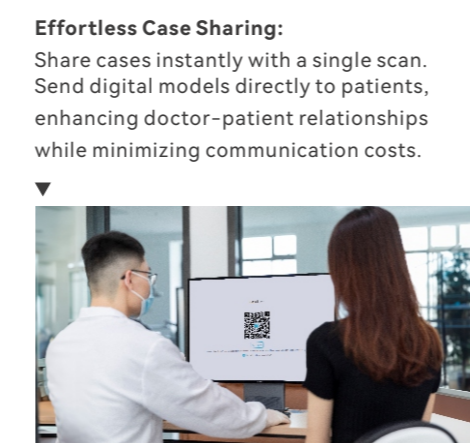


Automatically identify and eliminate unnecessary soft tissue.



**Insightful Data Analytics:** Access a comprehensive data statistics system through clear and intuitive charts. Gain valuable insights into your business's growth and development.

**Robust Cloud Ecosystem:** Experience the power of a complete partner management system within our cloud ecosystem. Simplify case processing with one-click delivery to processing facilities.



**Specifications**

<b>Handpiece</b>		<b>Tip</b>	
Size	173 x 46 x 36mm	Size	22 x 19mm (L) 19 x 17mm (S)
Weight	251g	Steaming sterilization	Up to 100 times - 134°C - 6 minutes
<b>Scanning</b>		<b>Auxiliary power supply</b>	NO
Scanning precision of entire arch	20µm	<b>Remote control</b>	YES
Field of view	16x14mm (L) 12x12mm (S)	<b>Calibration</b>	Calibration free
Button	Double buttons		

**Minimum System Requirements Recommended System Specification**

<b>CPU</b>	Intel Core i7-10870H	Intel Core i7-12700H
<b>Graphics card</b>	NVIDIA RTX2060	NVIDIA RTX3060
<b>Memory</b>	16GB	32GB
<b>Hard disk</b>	1TB SSD	1TB SSD
<b>Operation system</b>	Win10 / Win11 64bit	Win10 / Win11 64bit
<b>Connector</b>	USB 3.0	USB 3.0
<b>LCD</b>	1920*1080 60Hz	1920*1080 60Hz